

PRODUCT TECHNICAL BULLETIN 36498

MWM LOW WATER SHUT-DOWN FLOAT IMPROVEMENT

Date:	28/6/2025
Issue:	A
Prepared for:	Owners and end users
Applicable machines:	MineCruiser Mk7, Mk8, Predator, Grader MWM repowered machines covered by MDR 114056 DES
Part numbers:	7-053987-700 and subsequent child parts

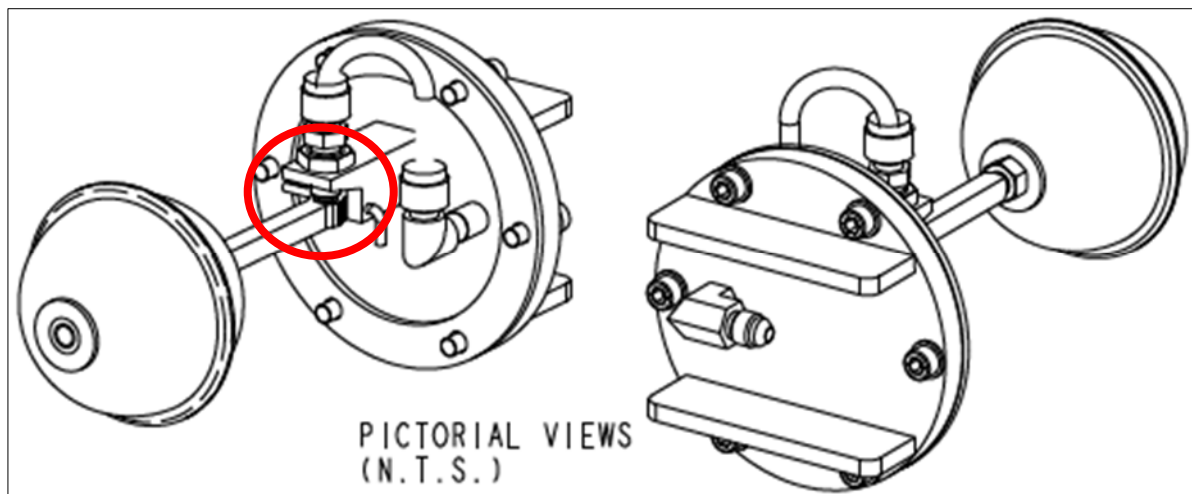


Figure 1: Float Assembly Seal arrangement

Background:

The MWM low water shutdown float is installed with a rubber seal design interfacing with a pneumatic fitting. Cougar has made a design improvement to extend the life of the seals and increase maintenance intervals for float seal replacement.

Communication: Design change

To improve the life of the float the following design changes were made to the low water float valve:

- The seal diameter has increased from 5mm to 8mm

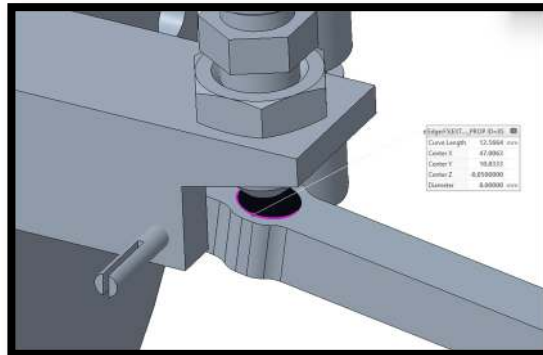


Figure 2: Float Seal Diameter

- The sealing face that contacts the seal has increased in area from 5.5mm² to 7.3mm²

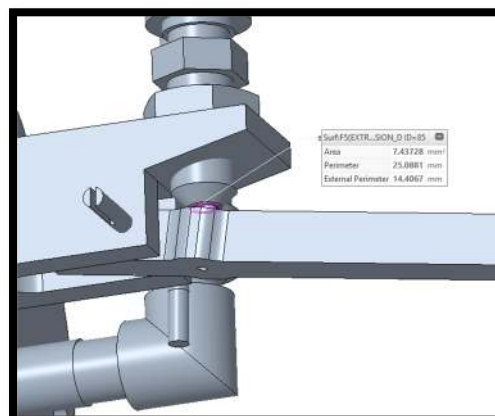


Figure 3: Fitting Sealing face

- The sealing face has had the sharp edges removed going from a nominal sharp edge to a blended 3mm radius.

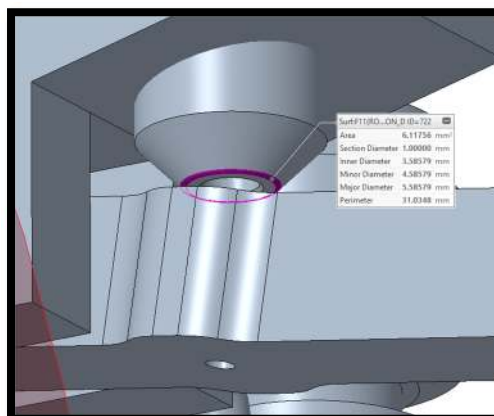


Figure 4: removal of sharp edge

- The opening stroke of the valve limited from 15 degrees 9 degrees.

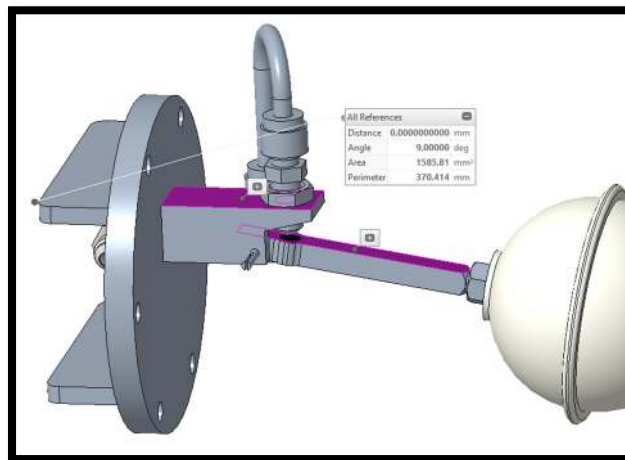


Figure 5: Valve stroke reduced

- The split pin has been upgraded.

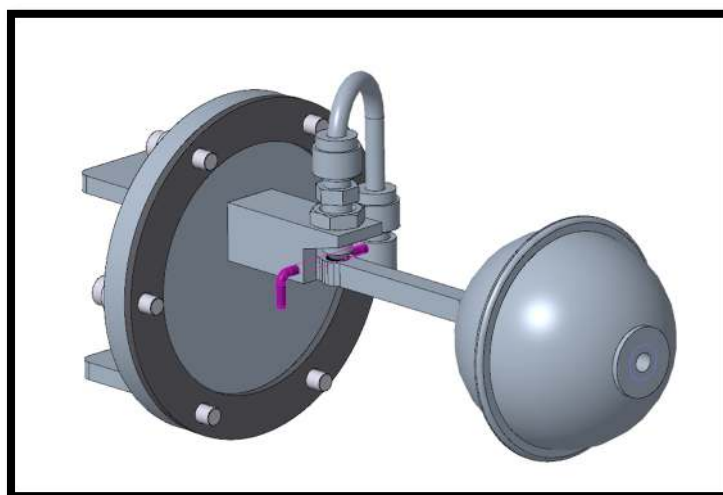


Figure 6: Split pin improvement

This change resulted in the following part number changes to the float components.

- Float rod MWM00213 with **7-056605-700**.
- Float pin MWM00212 with **7-056606-700**.
- Float plate MWM00215 with **7-056607-700**.
- Split pin 7-053987-709 with **7-050434-701**.

Impact to Design Registration MDR 114056 DES

This product improvement has been registered with the resources regulator of NSW as an amendment to MDR 114056 DES-7a. As such the person in management control of the registered plant must obtain a copy of the new registration document relating to this change. There is no change to the registration drawing 7-054496-700 or respective control circuit drawings. The parts manual update drawing is provided as part of this bulletin.

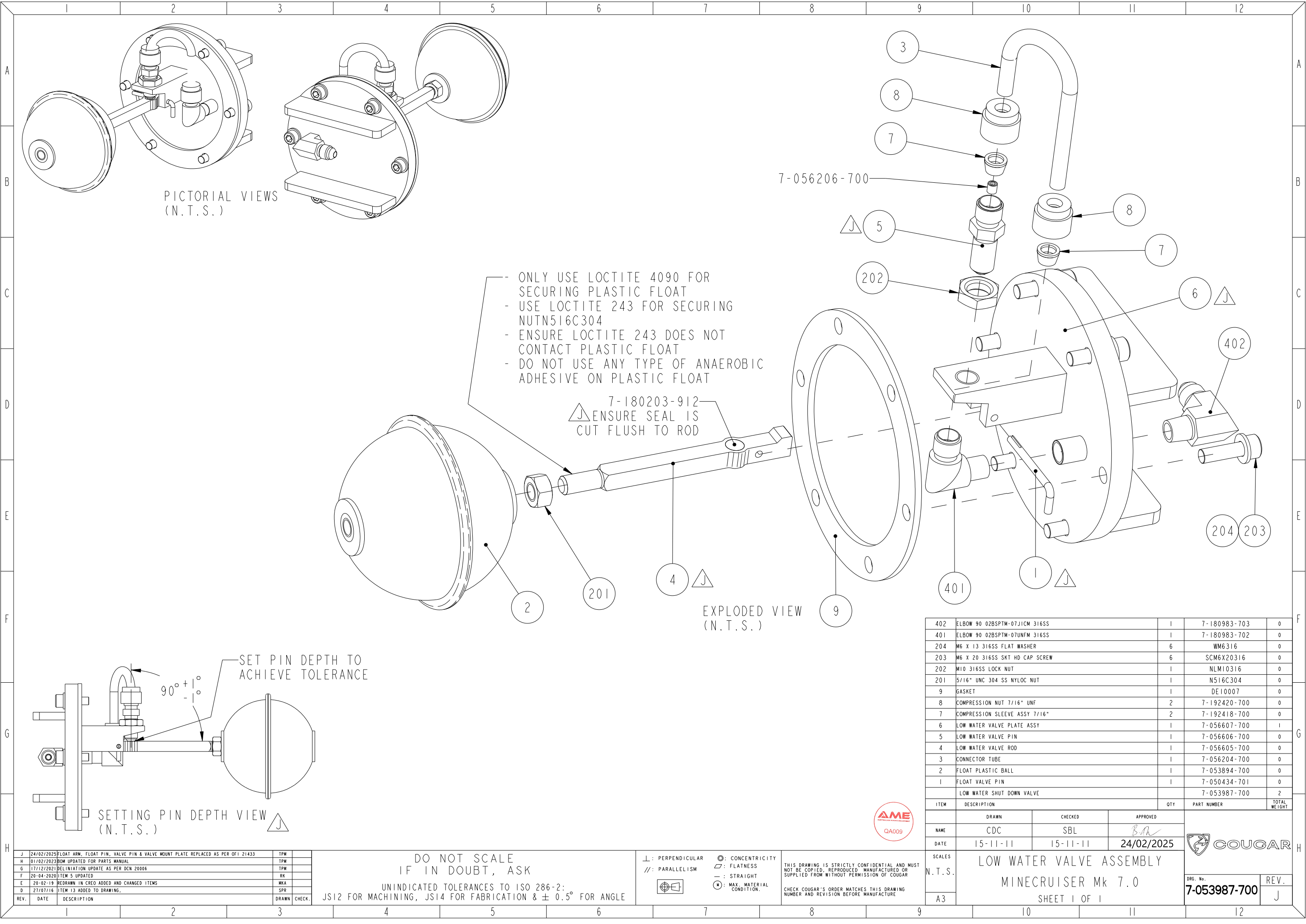
Please distribute this bulletin to all relevant personnel

Cougar Contacts in respect to this bulletin:

Operations Manager	Jacob Cassar	0410 042 501
Compliance and Business Improvement	Bill Davidson	0409 562 385
Product Support QLD	Mick Ruhl	0428 561 237
Product support NSW	Josh Preece	0419 880 414
Branch Manager – Mackay	Steve Morris	0483 205 411
Product support south coast NSW	Cameron Pike	0428 628 944
Spare Parts Manager	Greg Davies	0422 025 295

References

7-053987-700 rev J - Low water shutdown assembly MWM Engine MDR 114056 DES



PARTS LIST

Drawing No: 7-053987-700

Description: Valve Low Water Valve MWM Mine Cruiser MK7.0 = MWM00205

Revision No: J

Date Approved: 24/02/2025

Line No	Code	Rev	Description:	Unit	Quantity
1	7-050434-701	A	Float Valve Pin	Each	1
2	7-053894-700	-	Float Plastic Ball (MM21021)	Each	1
3	7-056204-700	C	1/4" CONNECTOR TUBE	Each	1
4	7-056605-700	A	MWM Low Water Valve Float Arm	Each	1
5	7-056606-700	A	MWM Low Water Valve Float Pin	Each	1
6	7-056607-700	A	MWM Low Water Valve Float Plate	Each	1
7	7-192418-700	-	Compression Sleeve Assy 7/16"	Each	2
8	7-192420-700	-	Compression Nut 7/16" UNF to 1/4" Tube SS MK7	Each	2
9	DE10007	-	Gasket L/W V/V Conditioner MWM Series 10	Each	1
200	7-610535-700	A	LOW WATER VALVE ASM FASTENER KIT	Each	1
401	7-180983-702	-	Elbow 90 02BSPTm-07 UNFm 316SS	Each	1
402	7-180983-703	-	Elbow 90 02BSPTm-07JICm 316SS	Each	1

PARTS LIST

Drawing No: 7-610535-700

Description: LOW WATER VALVE ASM FASTENER KIT (7-053987-700)

Revision No: A

Date Approved: 9/04/2025



B.A.

Line No	Code	Rev	Description:	Unit	Quantity
201	N516C304		5/16" UNC 304SS HEX NUT	Each	1
202	NLM10316		M10 316SS LOCK NUT	Each	1
203	SCM6X20316		M6 X 20 316SS SKT HD CAP SCREW	Each	1
204	WM6316		M6 316SS FLAT ROUND WASHER	Each	1